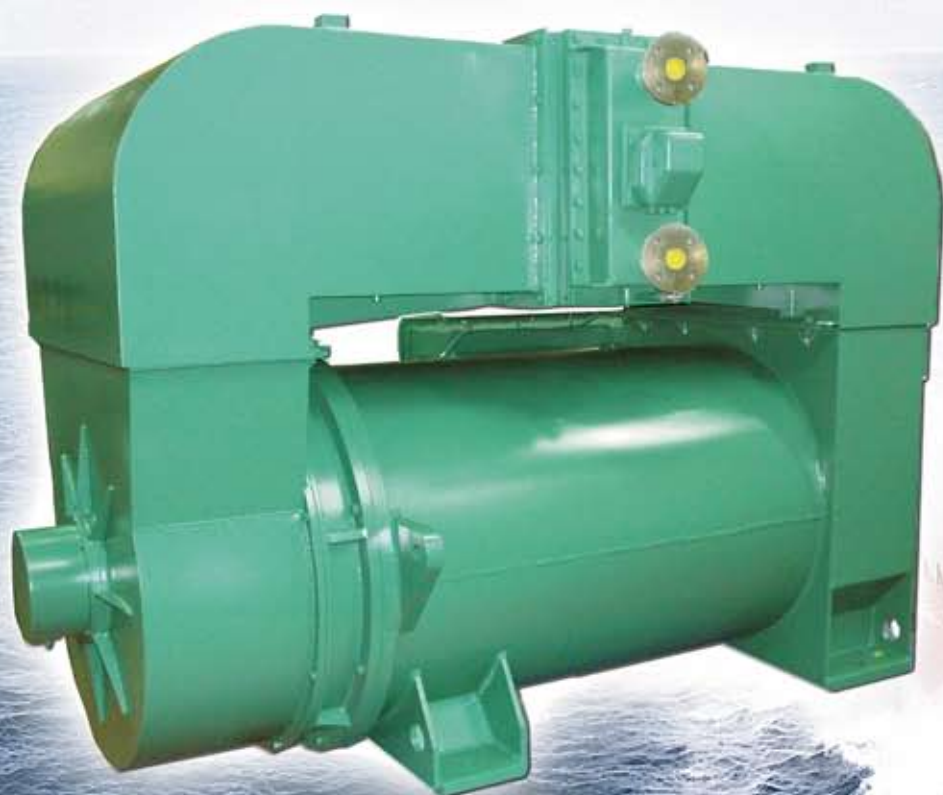


# ***MARINE SOLUTIONS***

**LERROY<sup>®</sup>  
SOMER**  
[www.leroy-somer.com](http://www.leroy-somer.com)

## ***BOW THRUSTERS / MAIN PROPULSION***



**FLSHR** 700 kW to 3 MW

> Designed for marine environment > High specific power > High efficiency level



# MARINE SOLUTIONS: BOW THRUSTERS / MAIN PROPULSION



## FLSHR

LOW VOLTAGE INDUCTION MOTORS  
COOLED BY AIR/WATER HEAT EXCHANGER

700 kW to 3 MW



### MAIN FEATURES

- Heat exchanger supplied by sea water or fresh water
- Self / forced ventilation
- Protection degree: IP55
- Random wire stator / form wound stator
- Insulation class: F / H
- Voltage: From 380V up to 1000V
- Frequency: 50 / 60Hz
- Mounting position: IM 1001 / IM 3011
- Steel housing
- Compliance to BV / LRS / ABS / DNV / CCS / RINA / GL, ...
- Duty: S2 - 30 min / S1
- Reinforced insulation for inverter duty
- Insulated shaft / bearings
- Leakage deviator brush
- Encoder
- Sensor: PTC- PT100, ...
- Water leakage detector

### DESIGNATION

